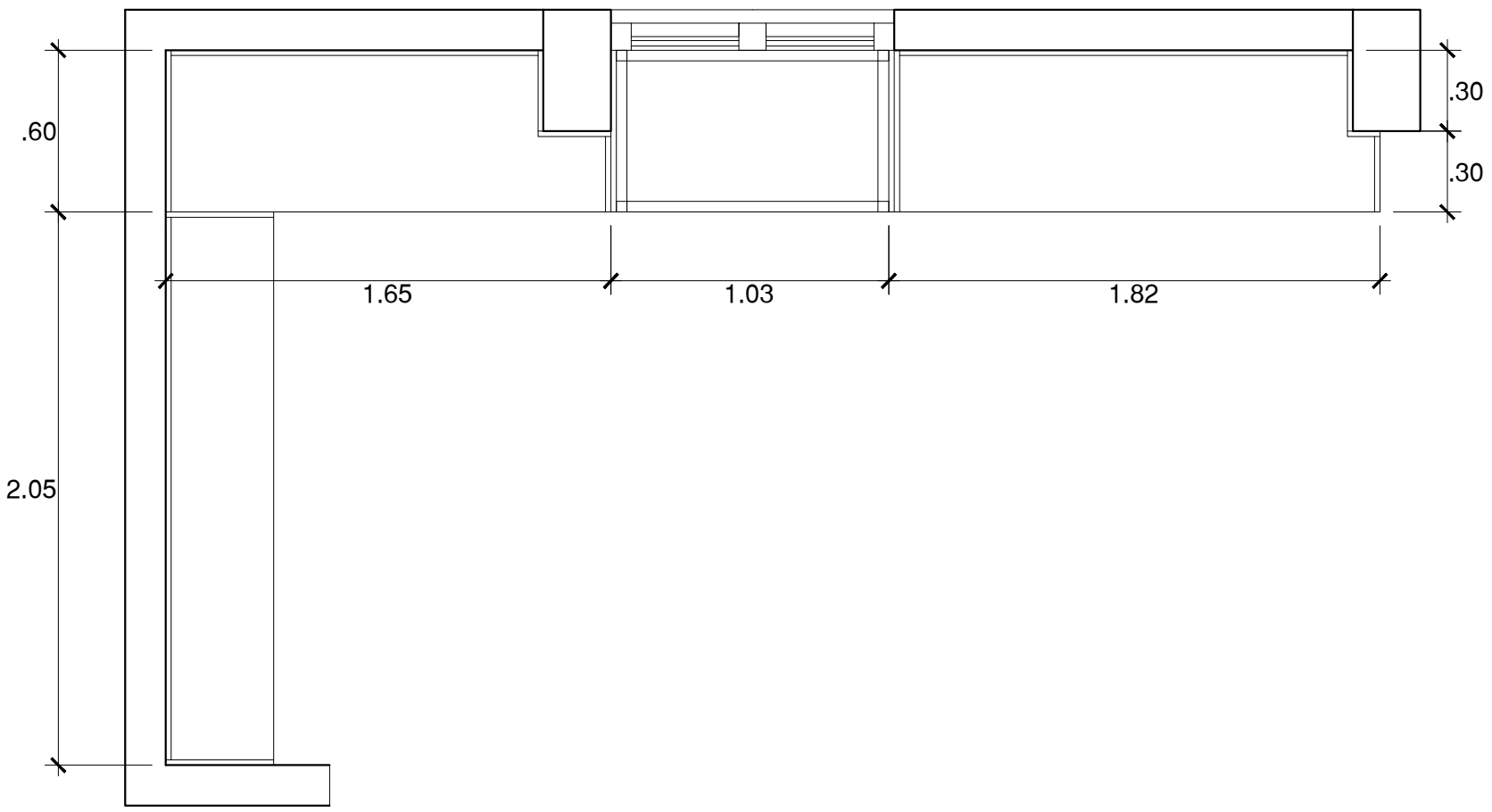
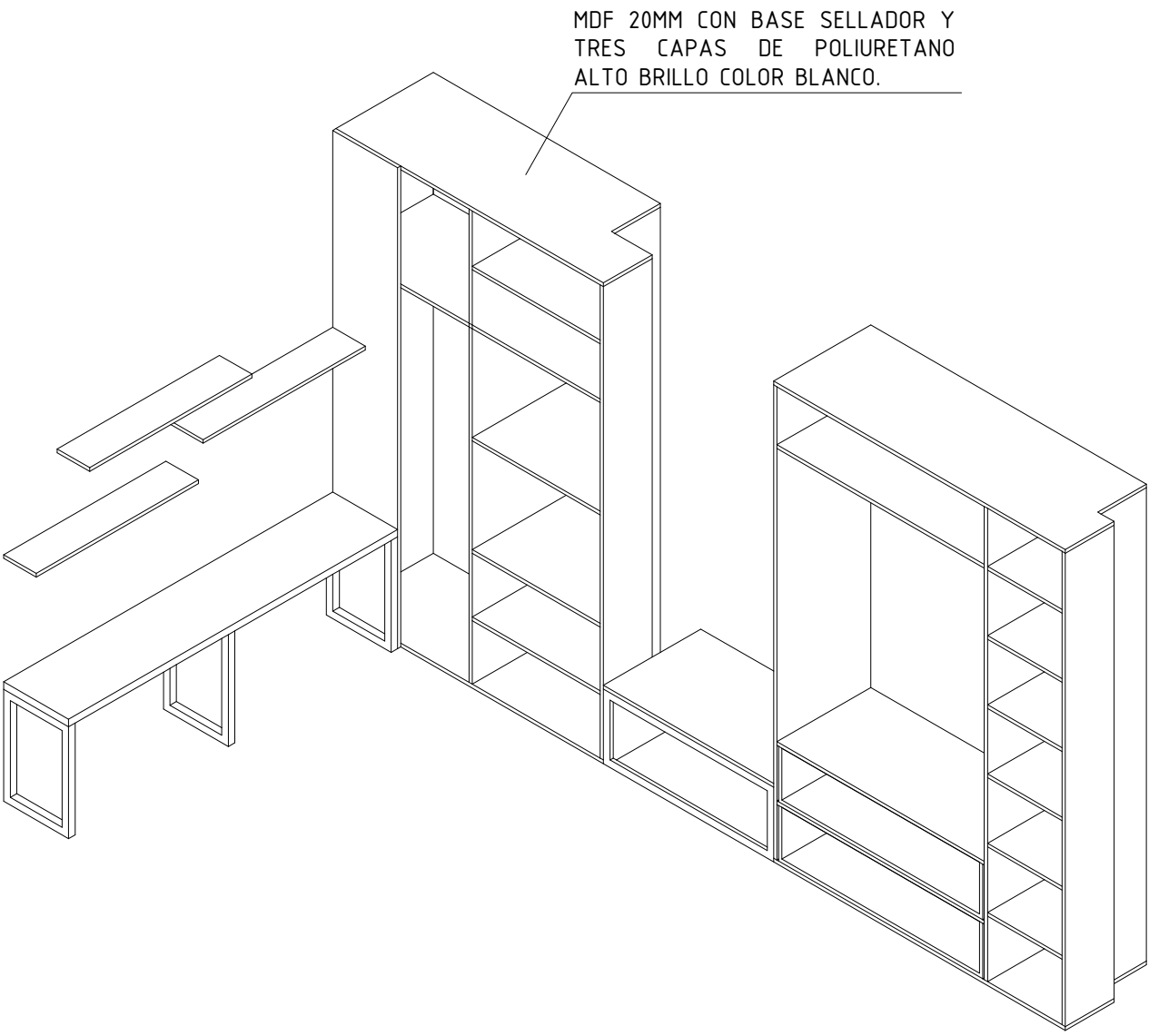
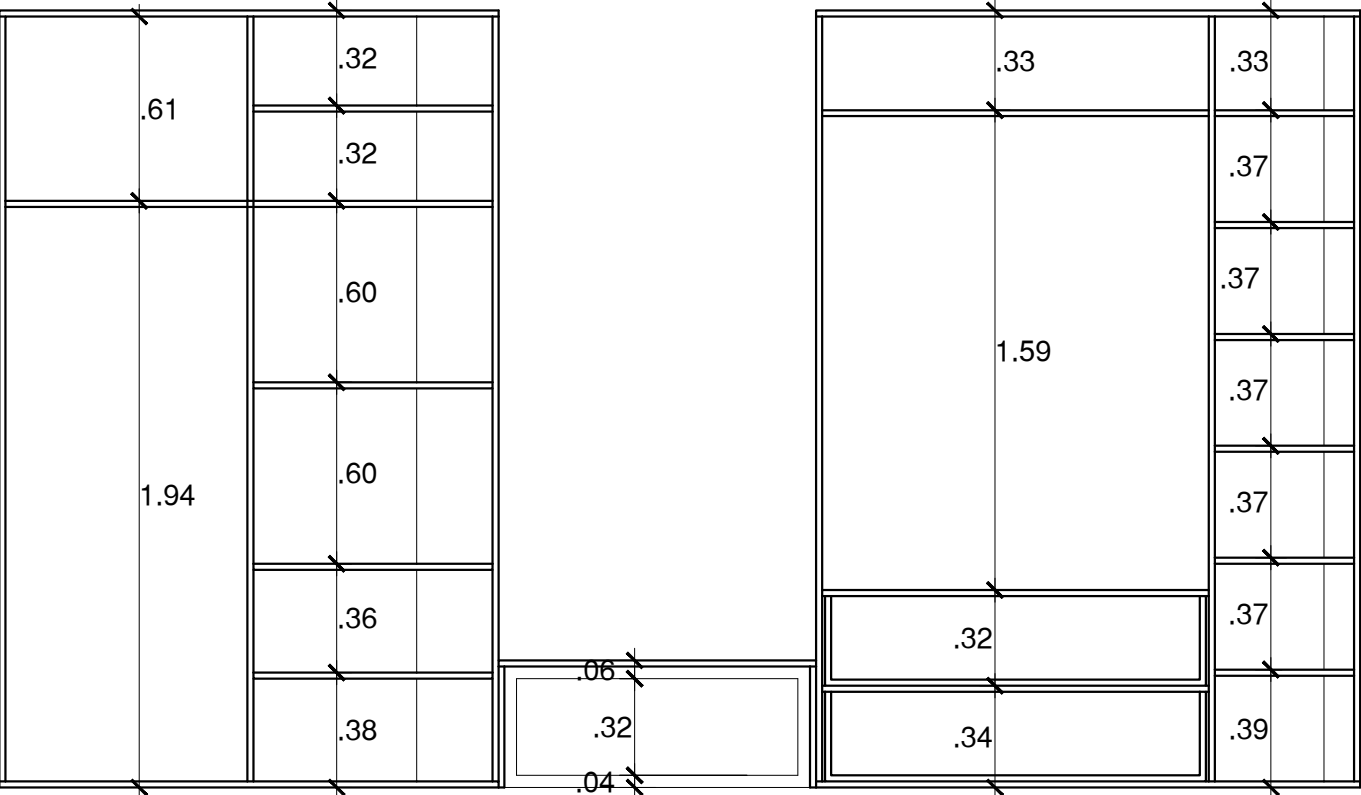


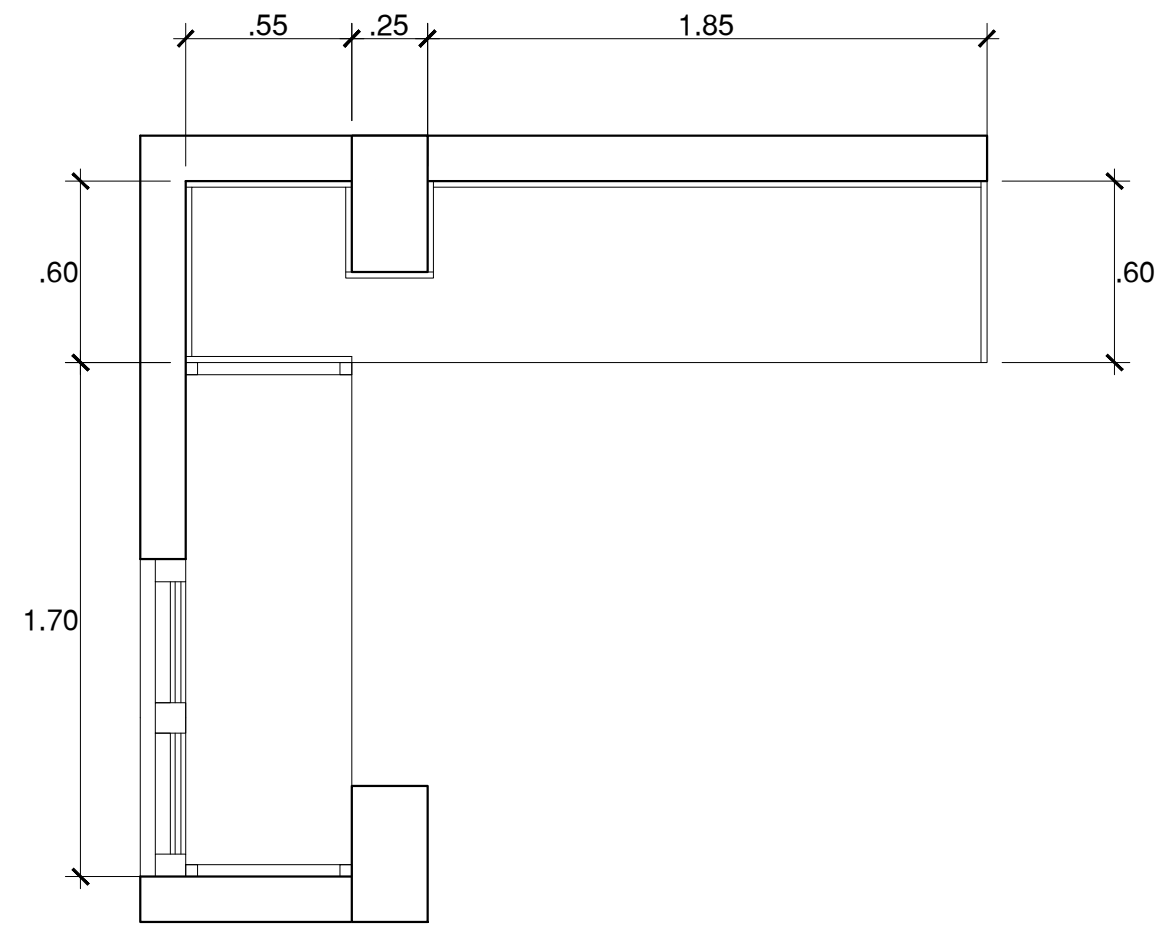
PLANTA C01



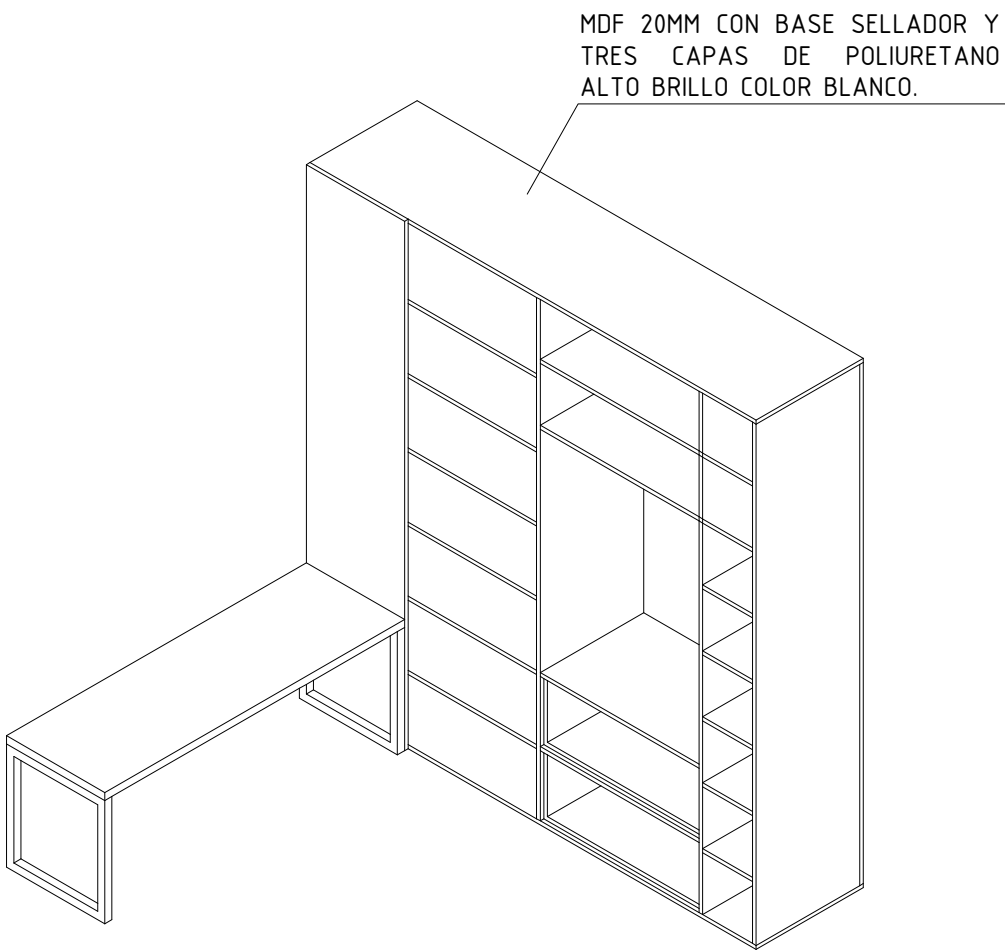
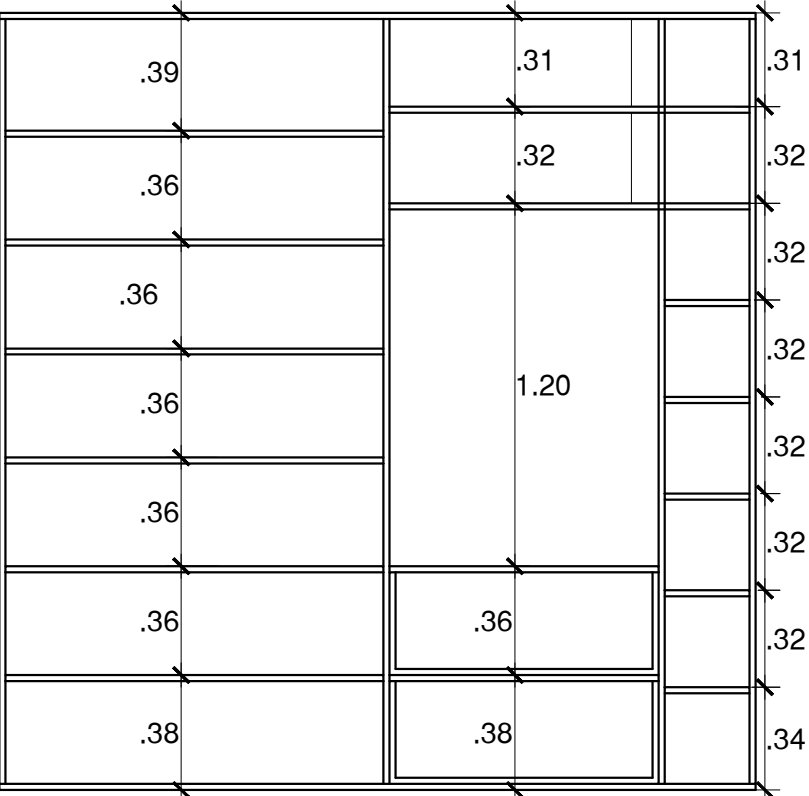
CORTE C01



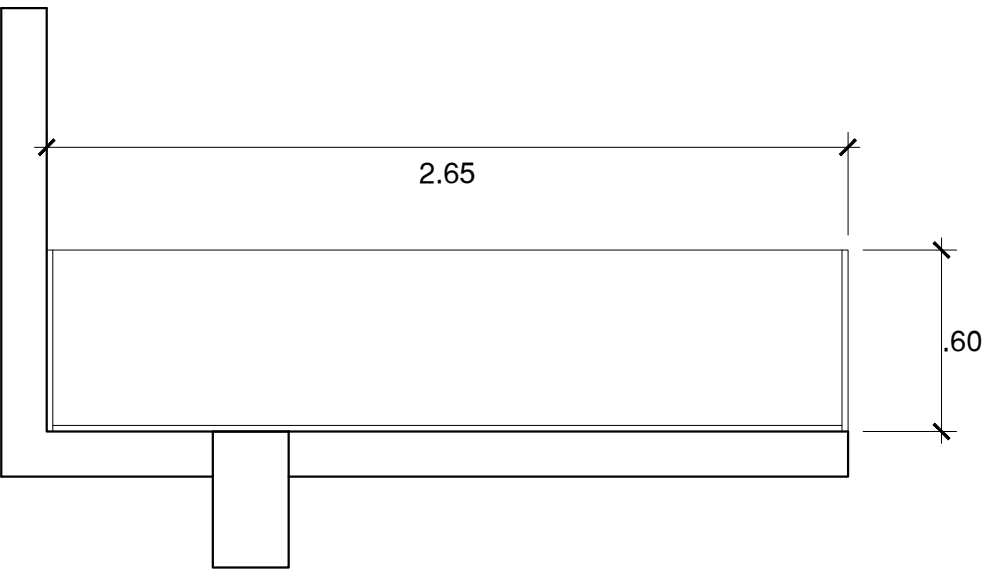
PLANTA C02



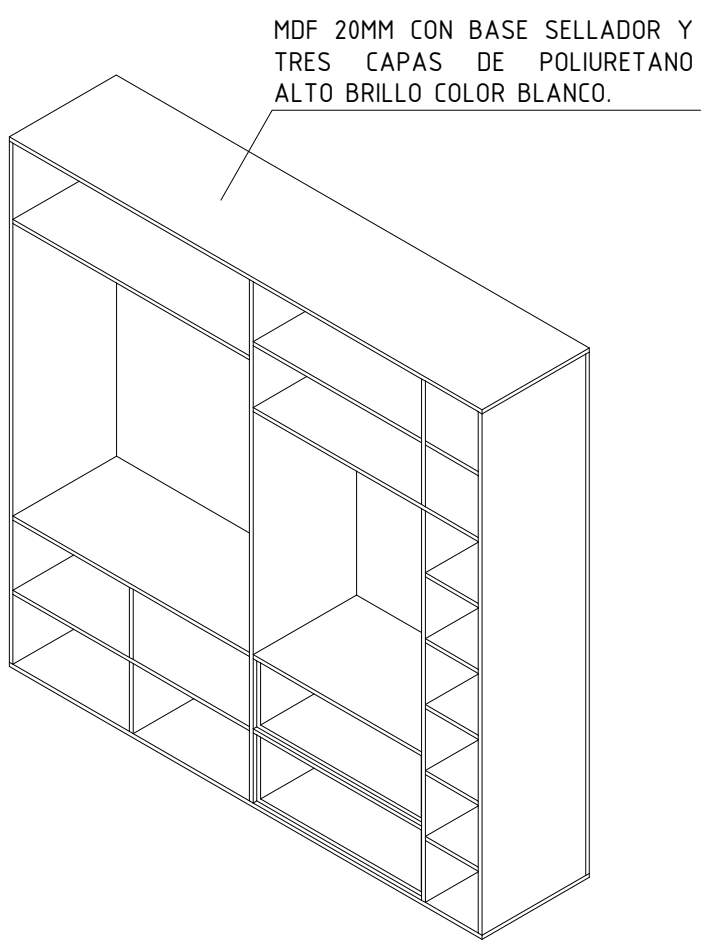
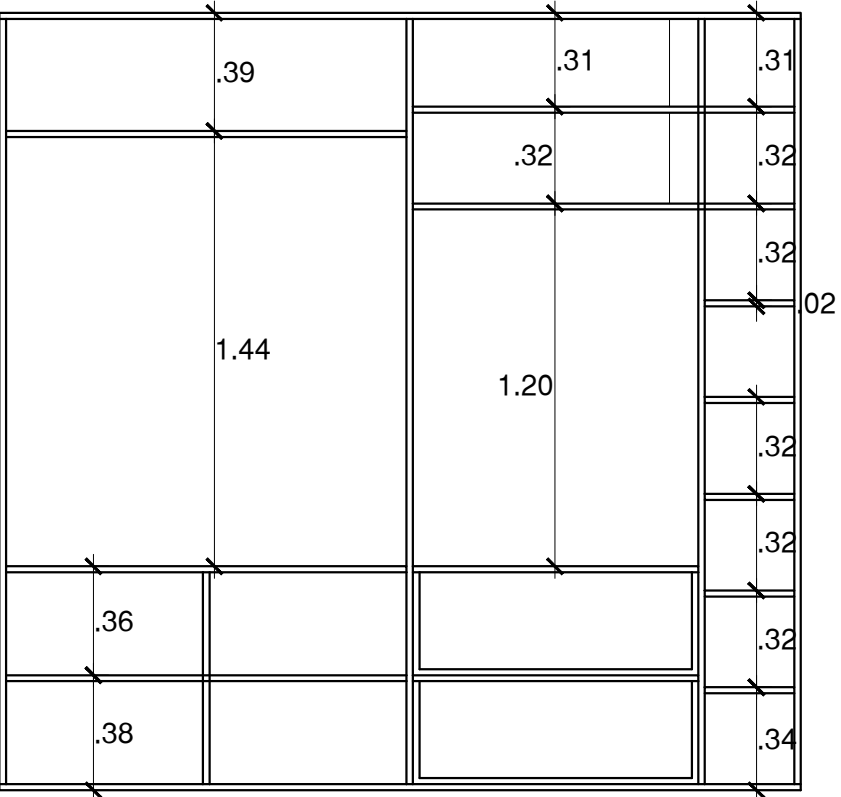
CORTE C02



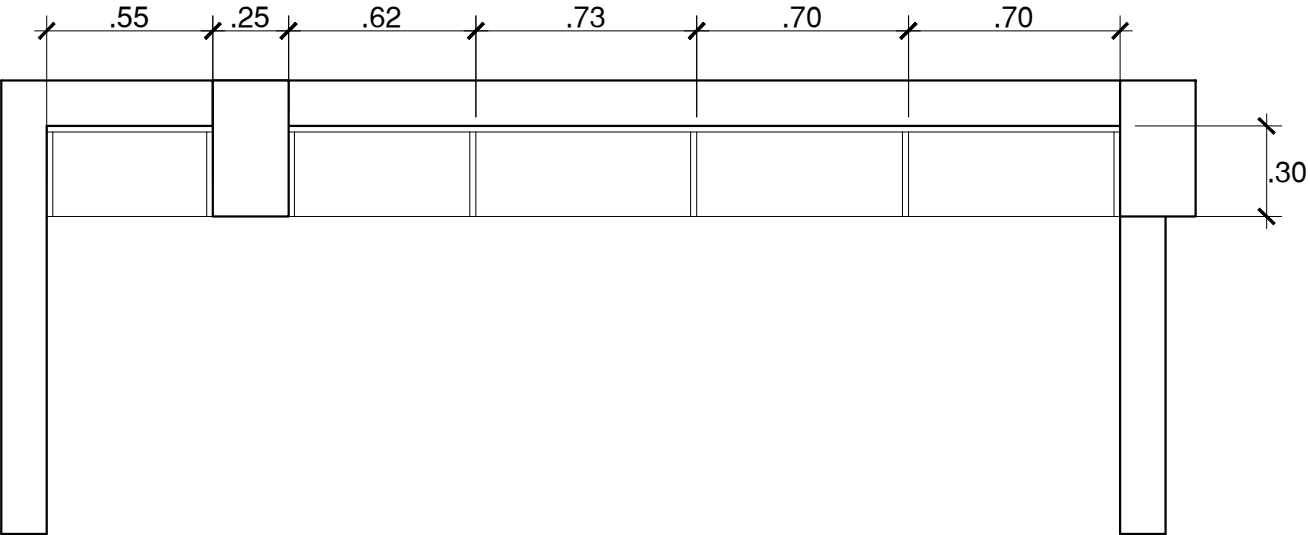
PLANTA C03



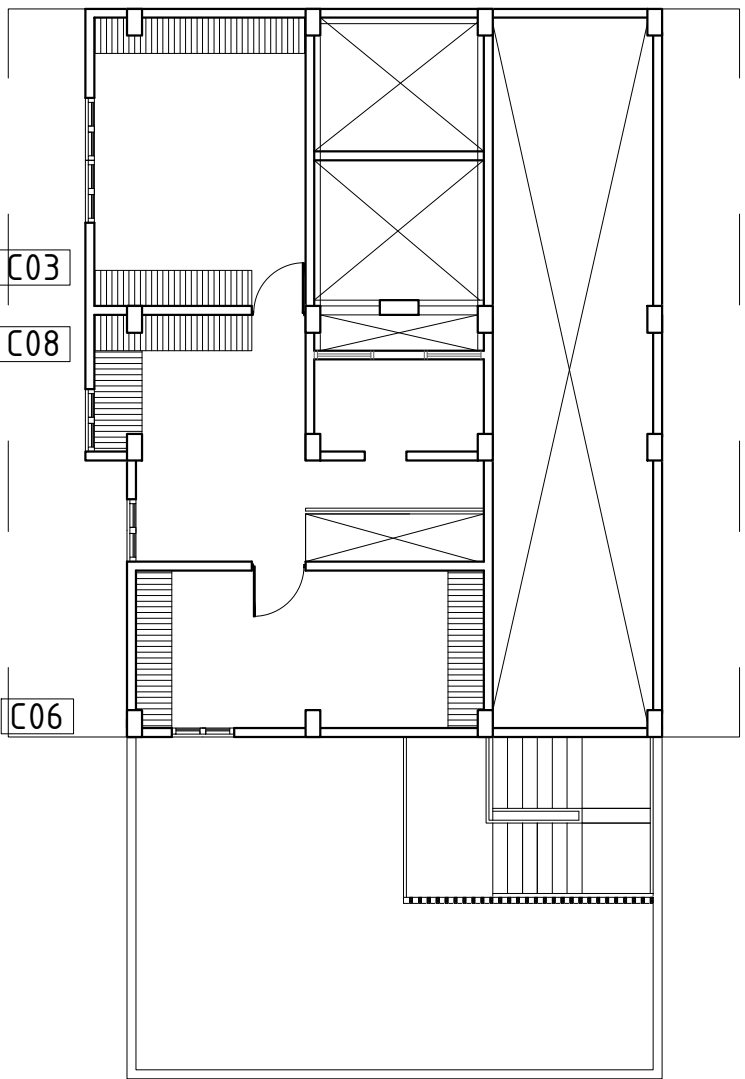
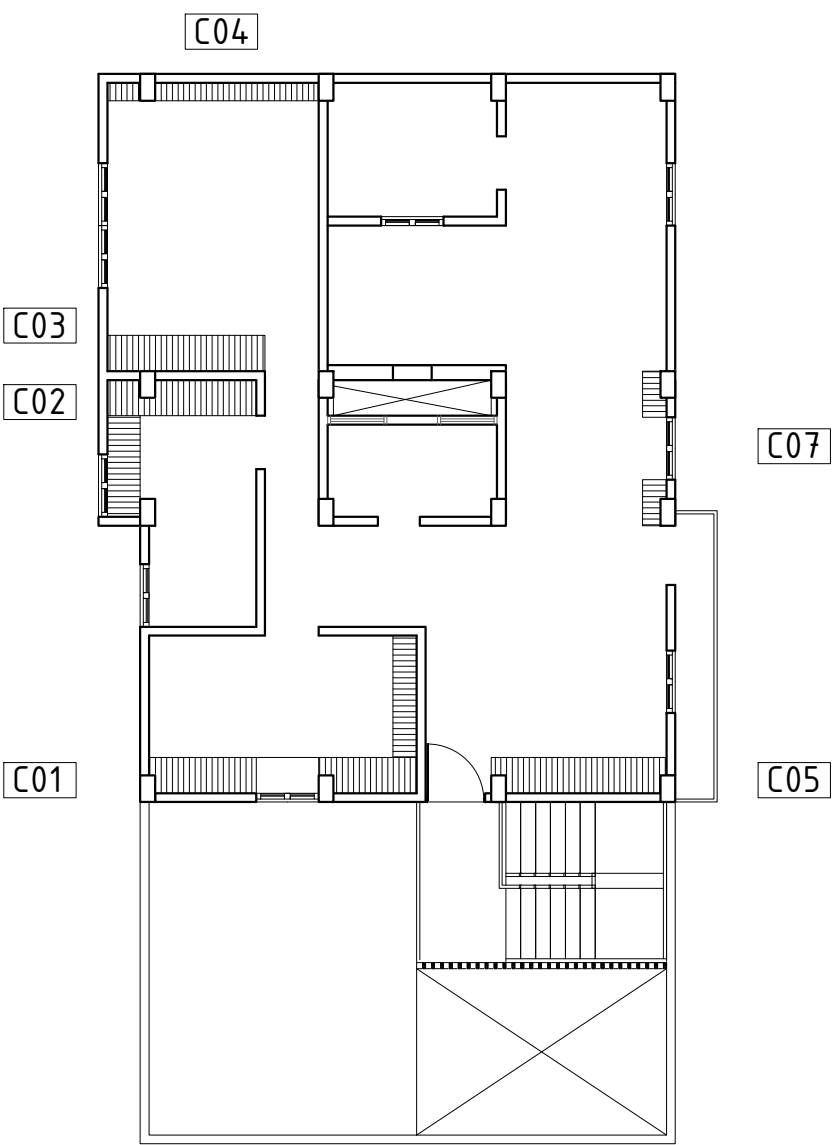
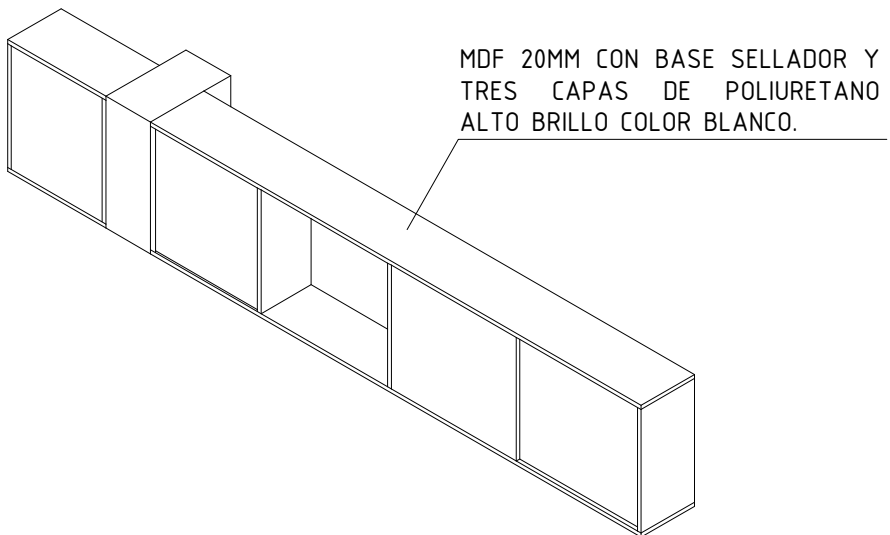
CORTE C03



PLANTA C04



CORTE C04



PROYECTO:
VIVIENDAS PRODUCTIVAS
Y PROCESADORA DE TRUCHA
HUARÁZ

ALUMNA:
VELÁSQUEZ LÓPEZ MARGARITA T.

DESCRIPCION:
**DETALLE DE MUEBLES
VIVIENDA TIPO A**

ESCALA:
1/25

FECHA:
JULIO 2021

PROFESIONAL RESPONSABLE:
ARQ. JORGE COSMÓPOLIS BULLÓN
ING. TOMÁS CARRASCO ORELLANO
ING. LUIS ALBERTO RAMOS MARTINEZ
ING. JOSE CARLOS YAFAC RISCO

LAMINA:
D-13